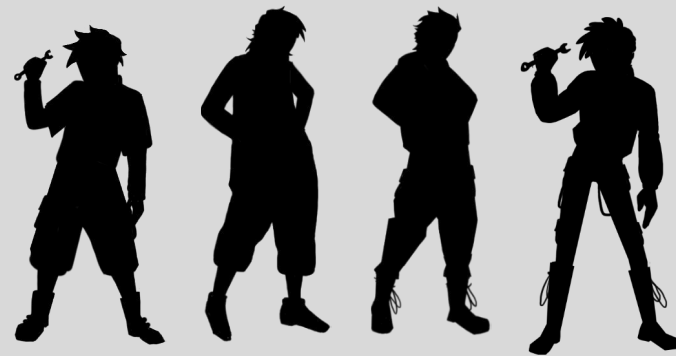


RONAN

Analeah Martinez

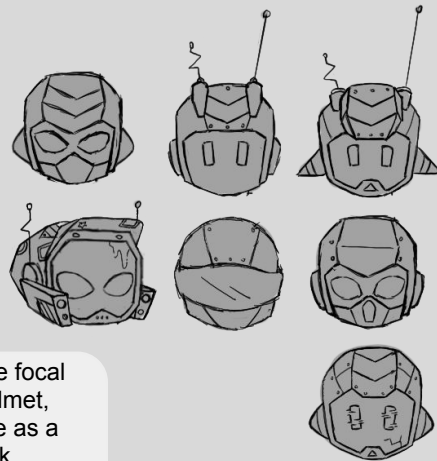
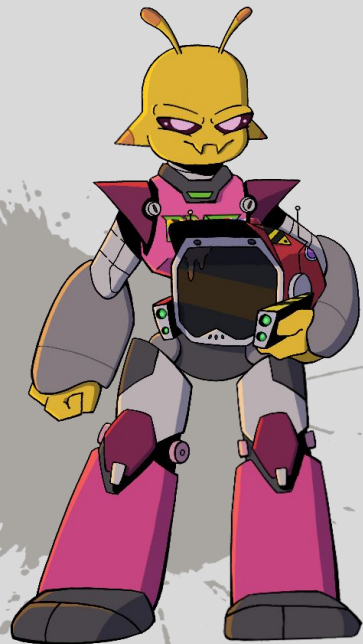
RONAN

A teenage genius with a passion for space, tirelessly crafts robots for bot battles while embodying rebelliousness, stubbornness, and a kind heart.

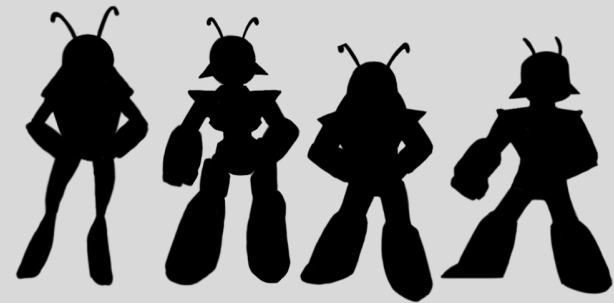
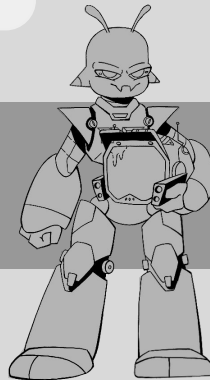


MEEK

A stranded alien from the planet Mipp, she boasts a fiery attitude and a narcissistic flair, harboring disdain for Earth and its inhabitants.

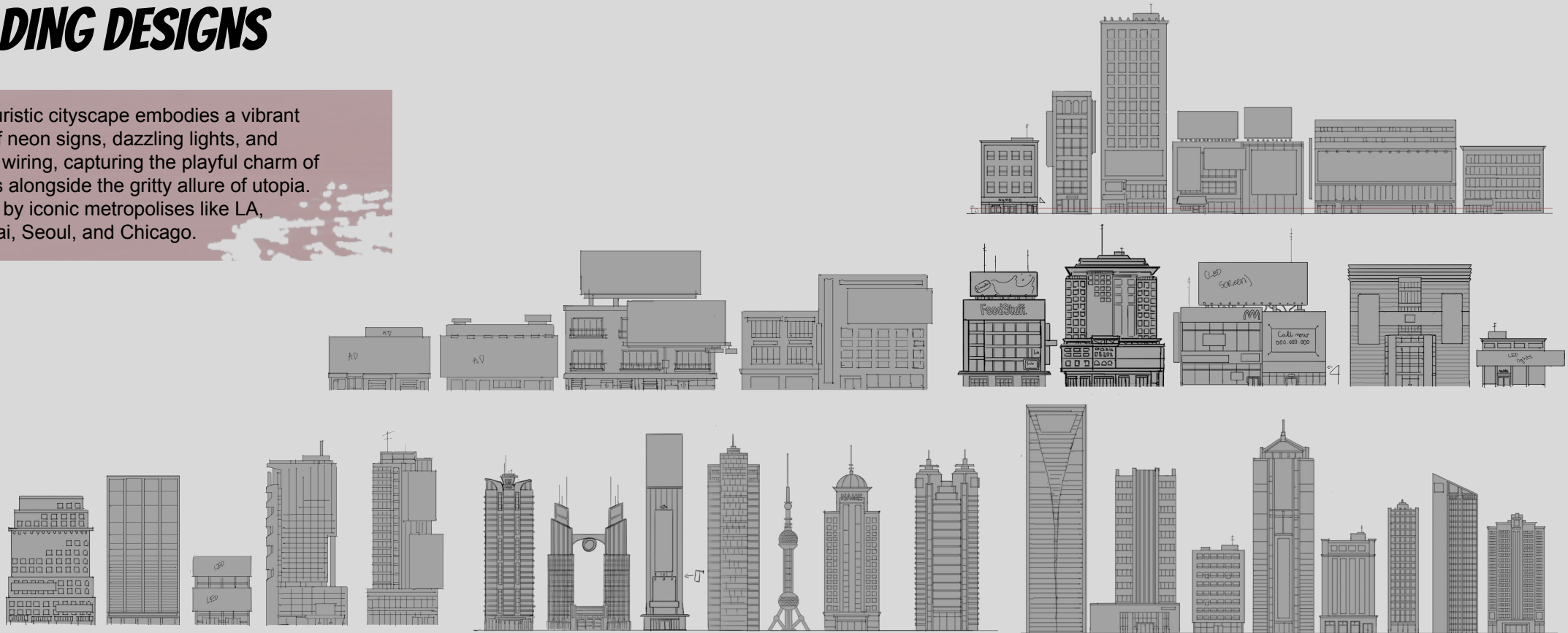


In her design, the focal point was the helmet, intended to serve as a disguise for Meek during her time on Earth.

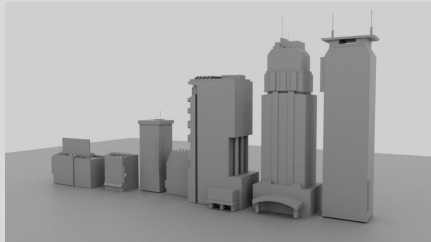
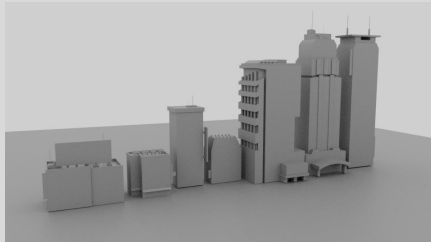
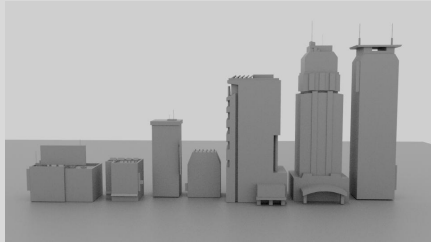


BUILDING DESIGNS

This futuristic cityscape embodies a vibrant fusion of neon signs, dazzling lights, and intricate wiring, capturing the playful charm of cartoons alongside the gritty allure of utopia. Inspired by iconic metropolises like LA, Shanghai, Seoul, and Chicago.



BUILDING LINE UP



Buildings modeled
in Maya to start 3D
blocking the city.

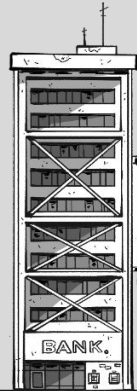
*Buildings to scale



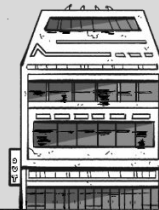
FAST FOOD
RESTAURANTS



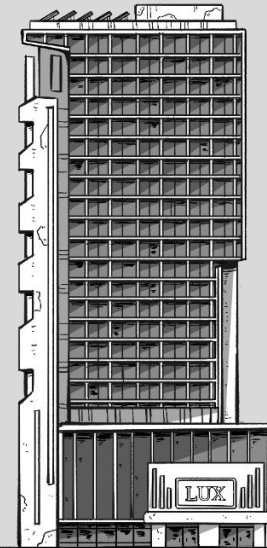
SUPERCENTER
STORE



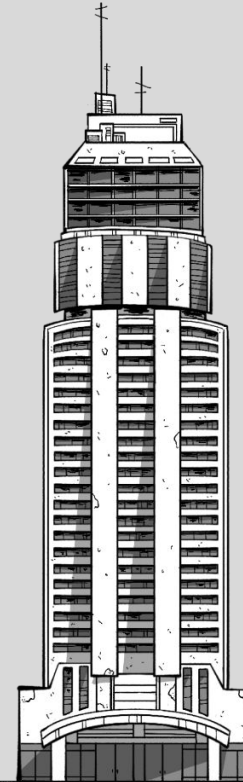
BANK



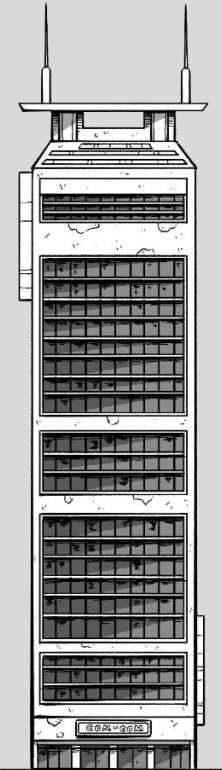
PHARMACY



LUXURY BRAND/
OFFICES

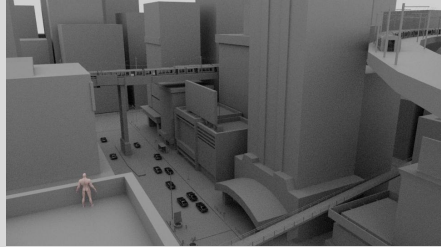


LUXURY
APARTMENTS

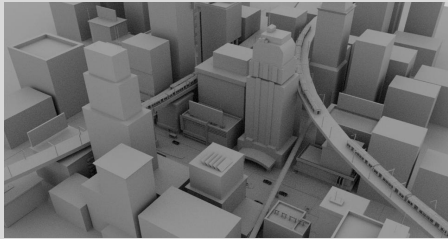


TELECOMMUNICATIONS

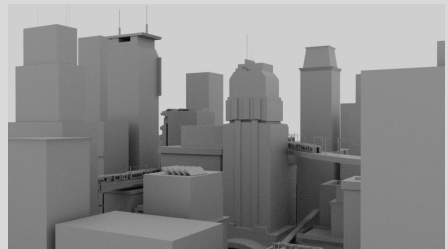
WIDE ESTABLISHING



The city was mapped out in Maya to create the composition

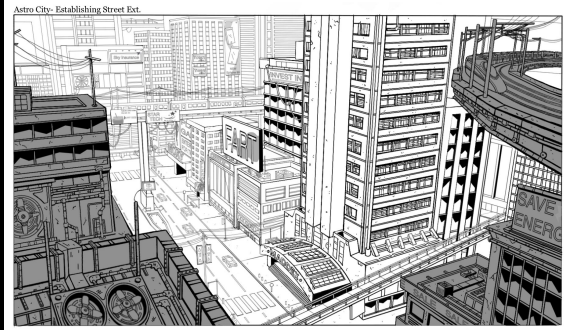


More shots showcasing the city.



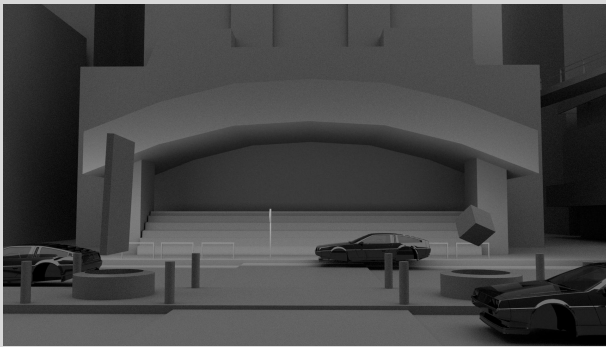
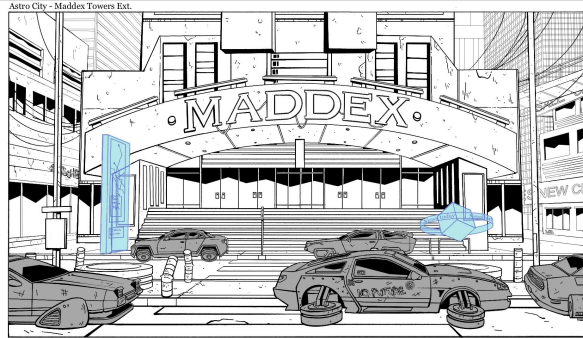
Astro City- Establishing Street Ext.



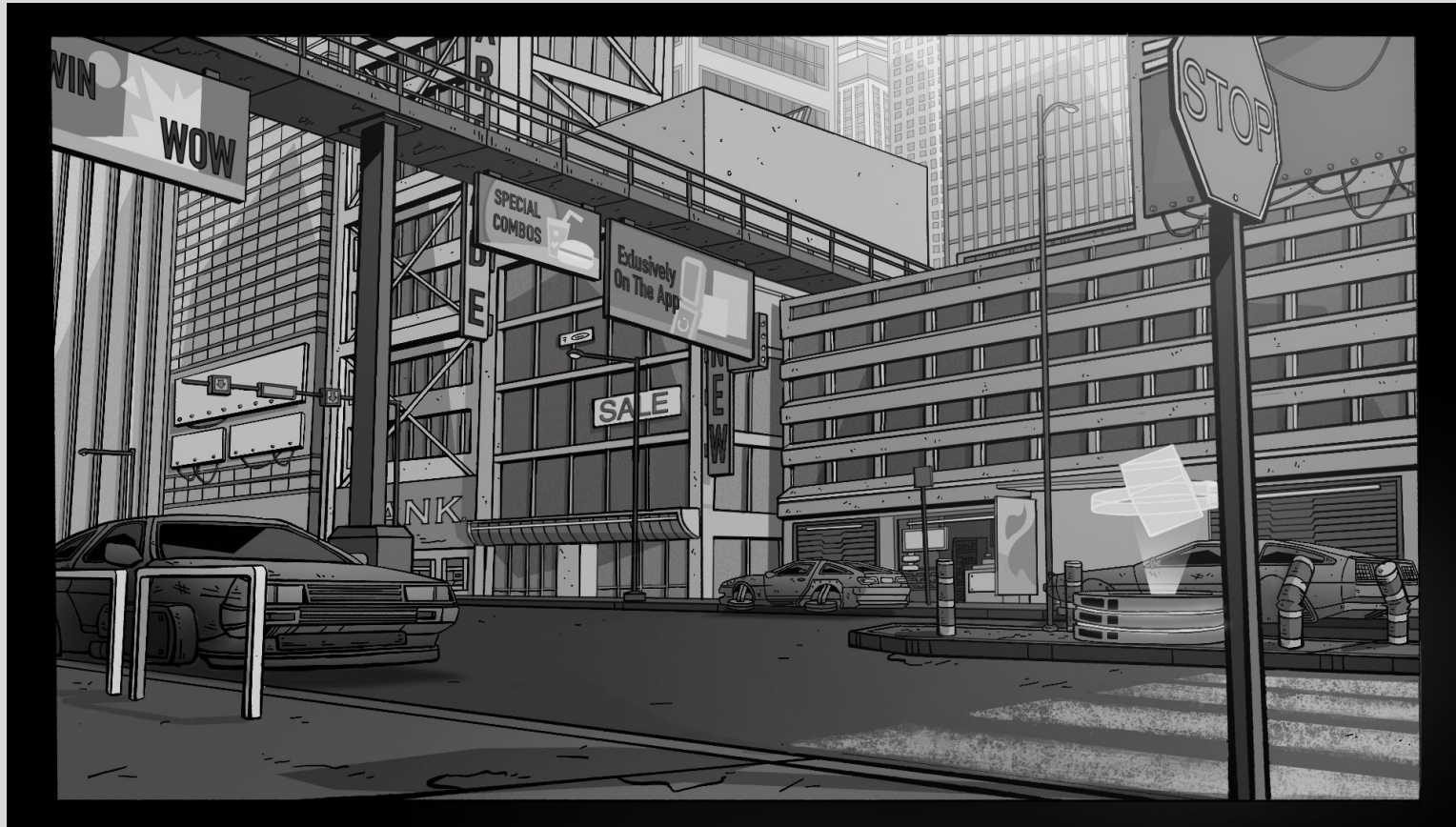
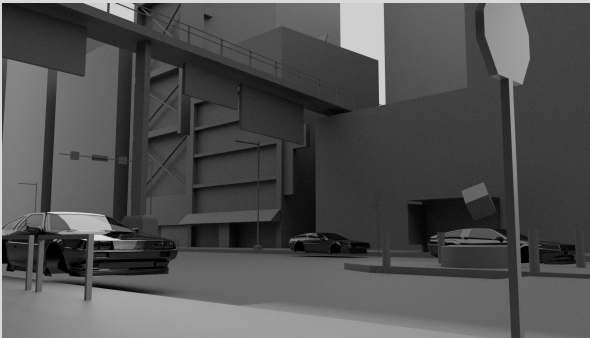
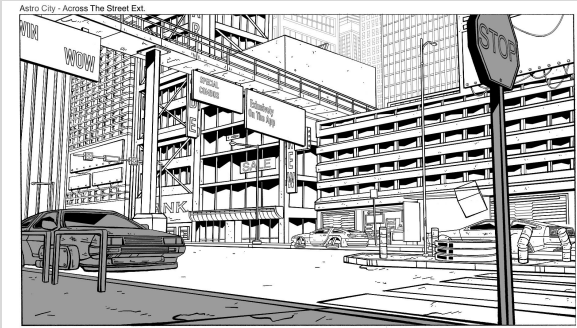


Video: <https://youtu.be/btmuGtMukIM>

ASTRO CITY View 1

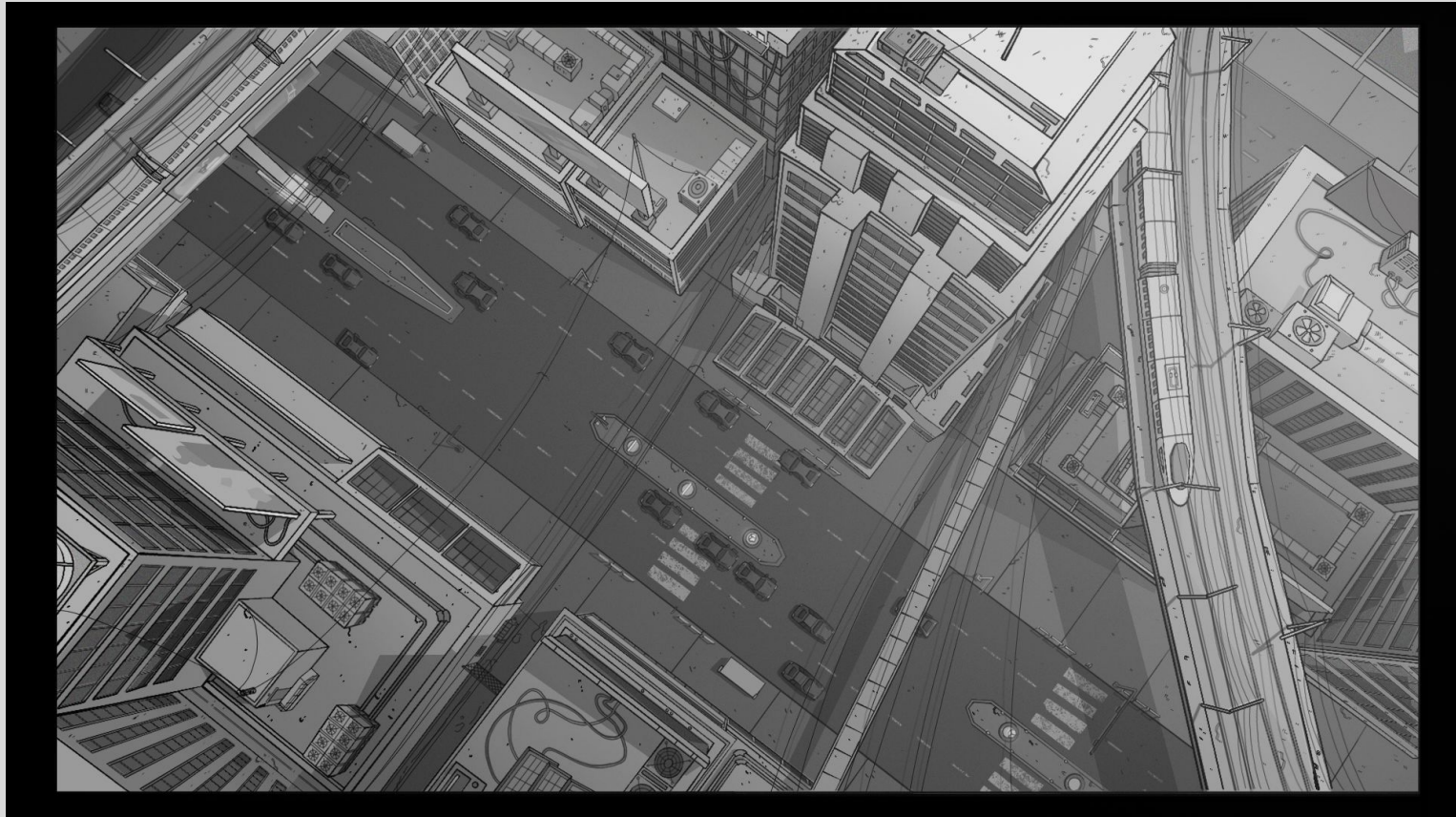
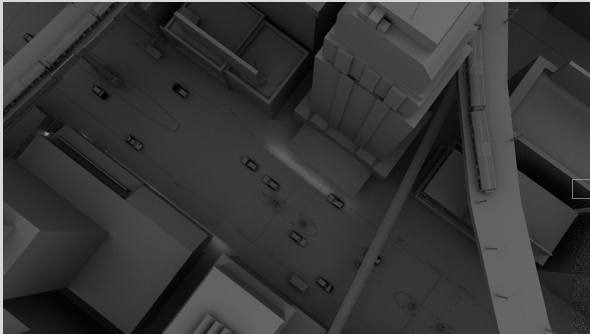
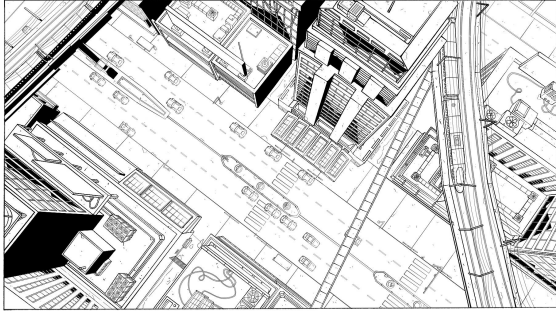


ASTRO CITY View 2



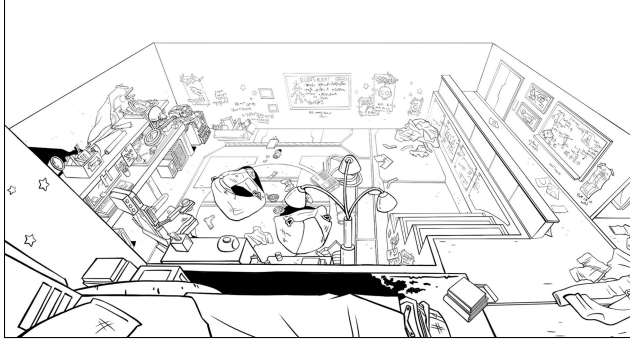
ASTRO CITY View 3

Astro City - Top View



RONAN'S ROOM INTERIOR

RONAN - Teens Room - View 3



Teens Room - View 1



RONAN'S ROOM INTERIOR

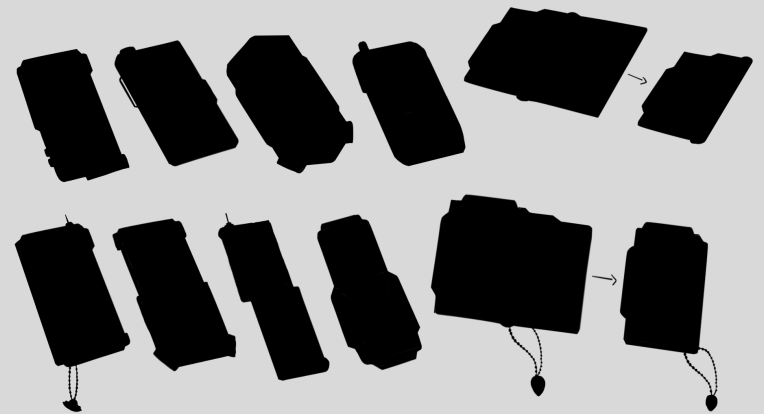
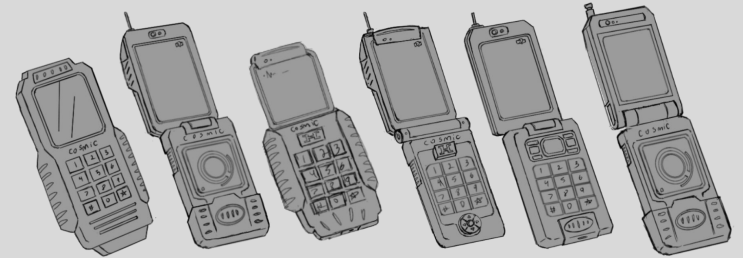
Teens Room - View 3



FLIP PHONE



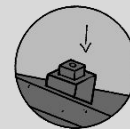
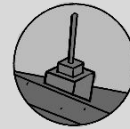
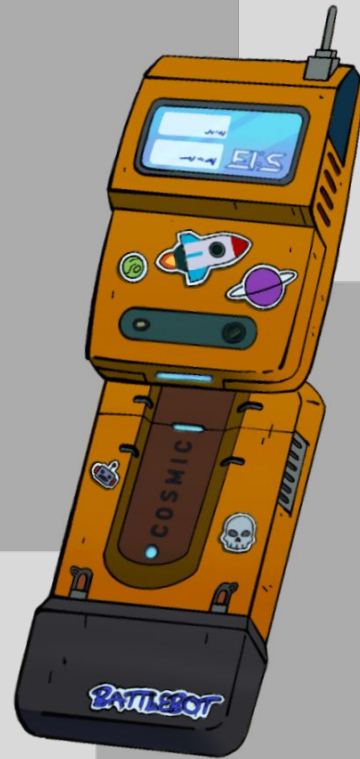
Ronan's phone is a contemporary marvel within this world, where technology seamlessly blends retro aesthetics with futuristic innovations.



FLIP PHONE



(Actual Size)

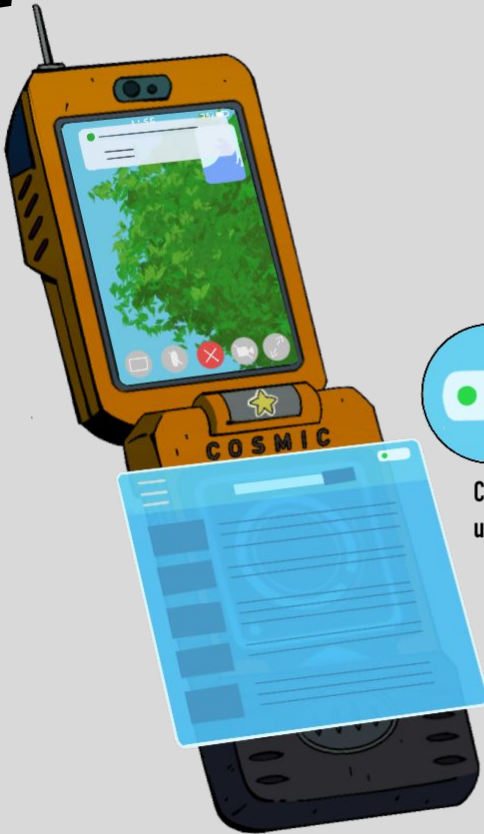


Antenna can extend and decrease

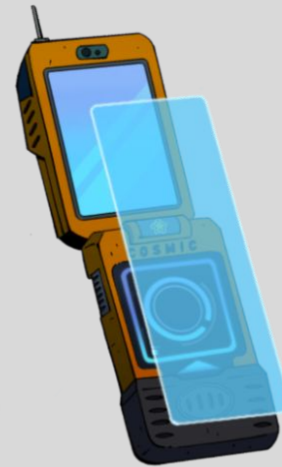
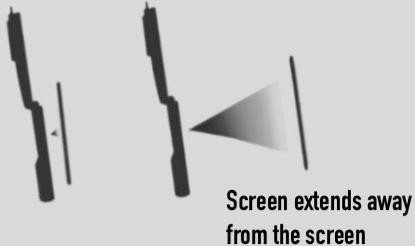


Both right and left side are the same

FLIP PHONE



Can share screens when using video chat

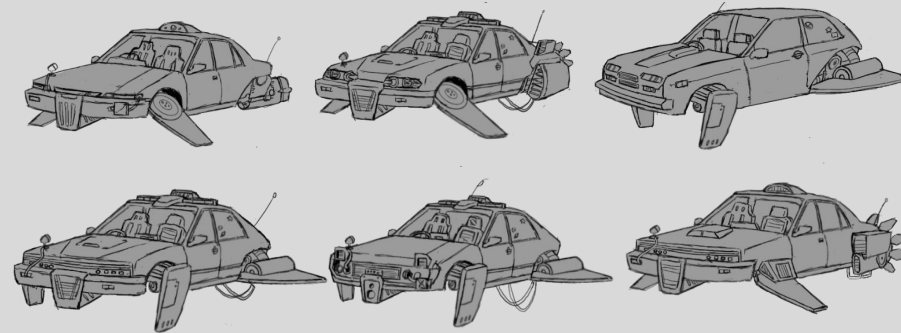
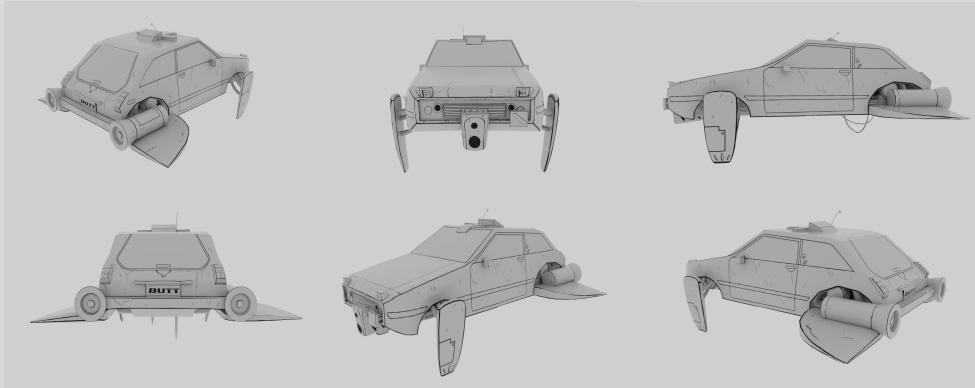


The screen can be manipulated to be horizontal or vertical

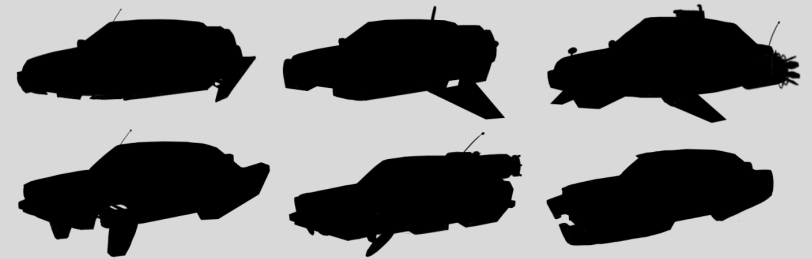


FLYING CAR

The car was given by Meek on Ronan's 16th Birthday as a gift.

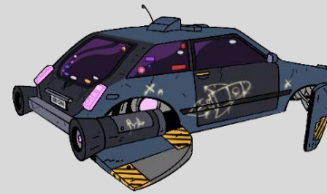
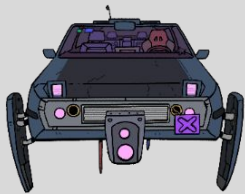
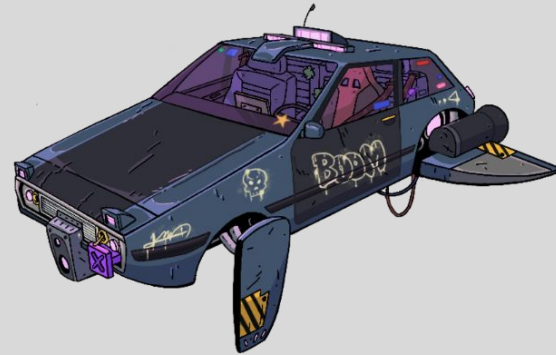


Starting with the drawing, the car was then modeled in Maya, Zbrush, and Substance Painter

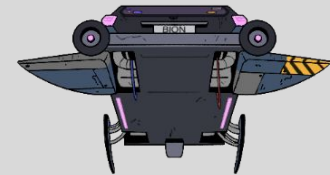
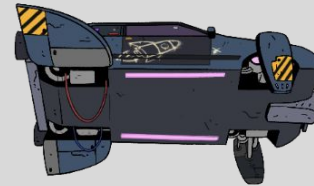


FLYING CAR

Crafted by Meek, this vehicle runs on magenta energy, consistent with Meek's distinctive technological palette.

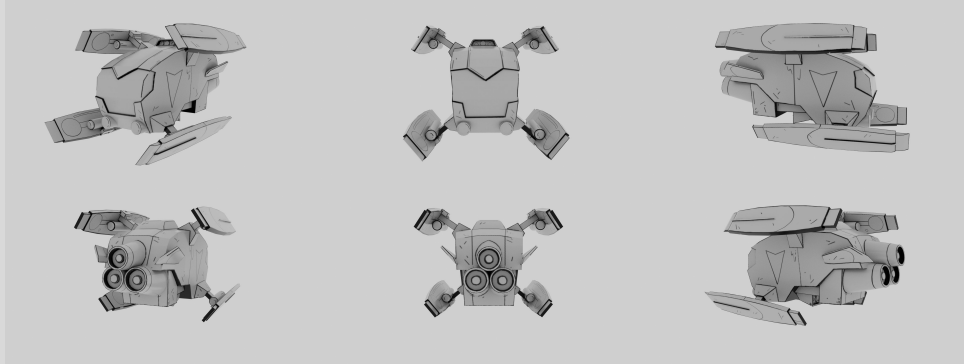


The graffiti was drawn on by Ronan

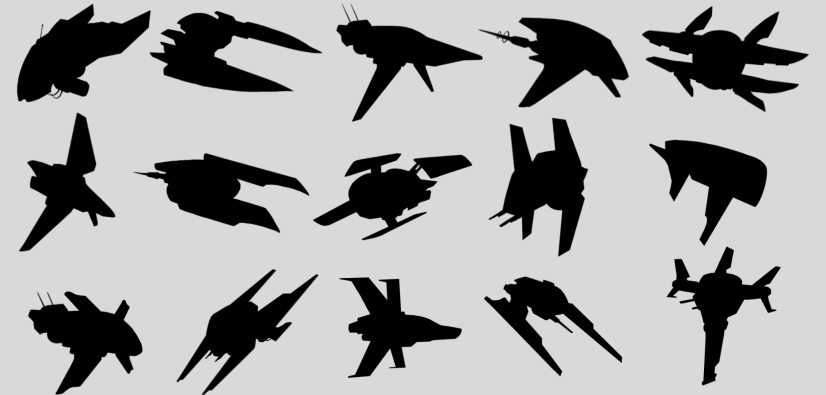
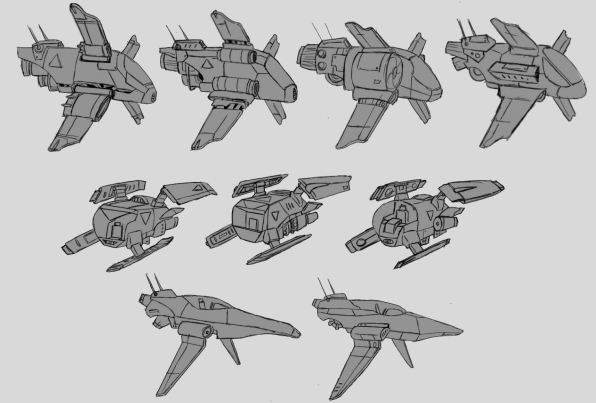


ALIEN SPACESHIP

The spaceship that Meek arrived (and crashed) in.

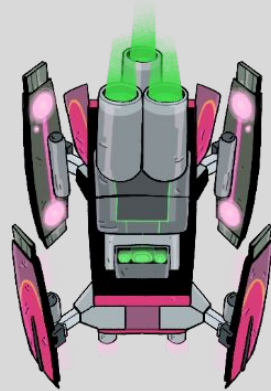
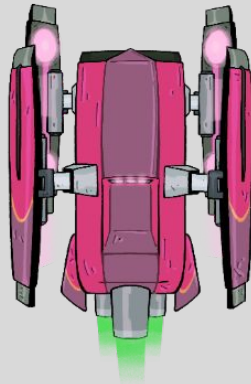
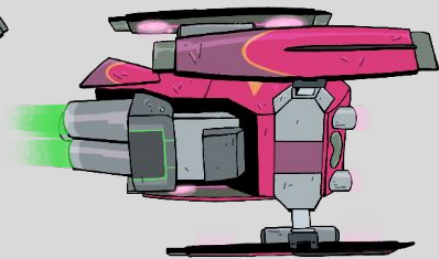
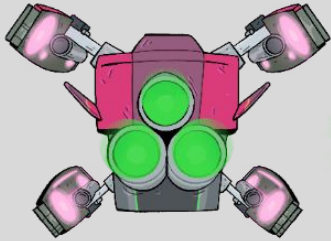
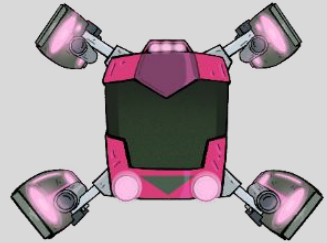
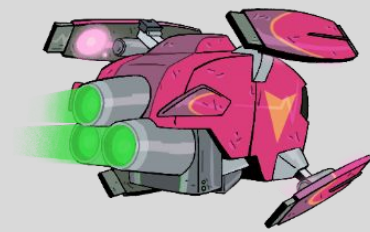


Starting with the drawing, the spaceship was then modeled in Maya, Zbrush, and Substance Painter

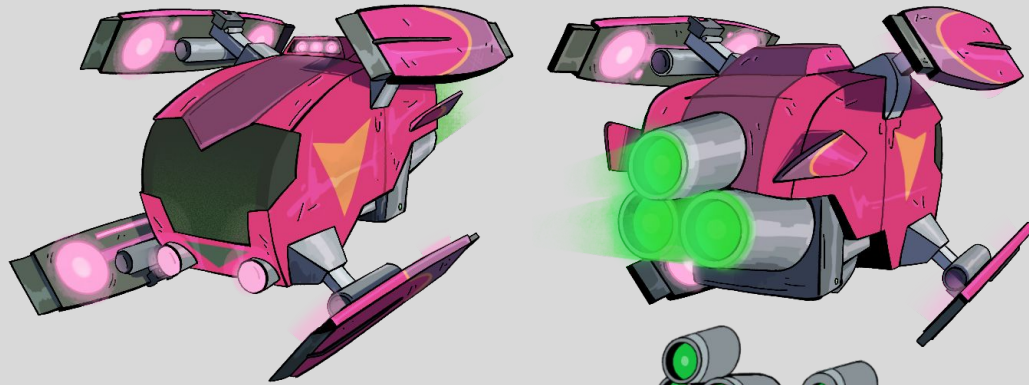


ALIEN SPACESHIP

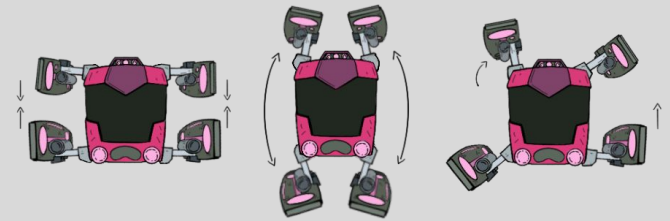
Meeks' Spaceship



ALIEN SPACESHIP



The wings are able to move 90 degrees vertically



Size comparison to a human

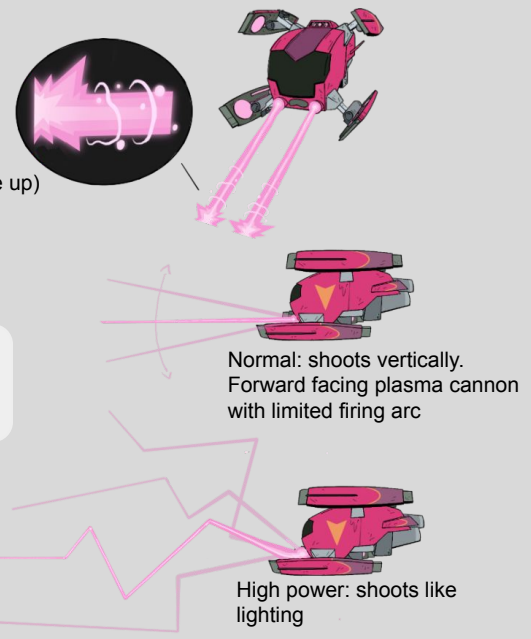


Size comparison to a pilot (alien)



Jet nozzles are able to close for thrust control

Plasma cannons have a 'normal' vs 'high' setting

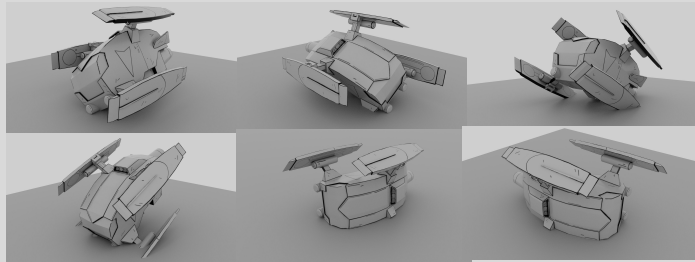


Impact shot (close up)

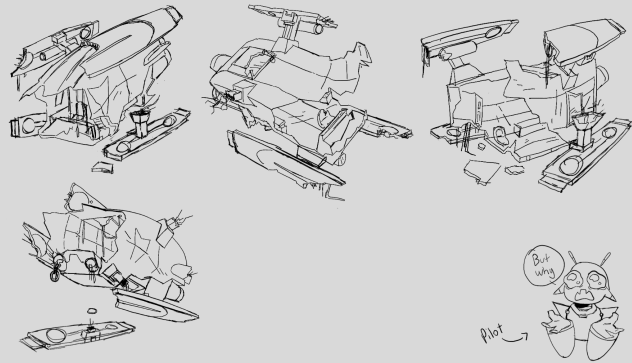
Normal: shoots vertically. Forward facing plasma cannon with limited firing arc

High power: shoots like lightning

ALIEN SPACESHIP

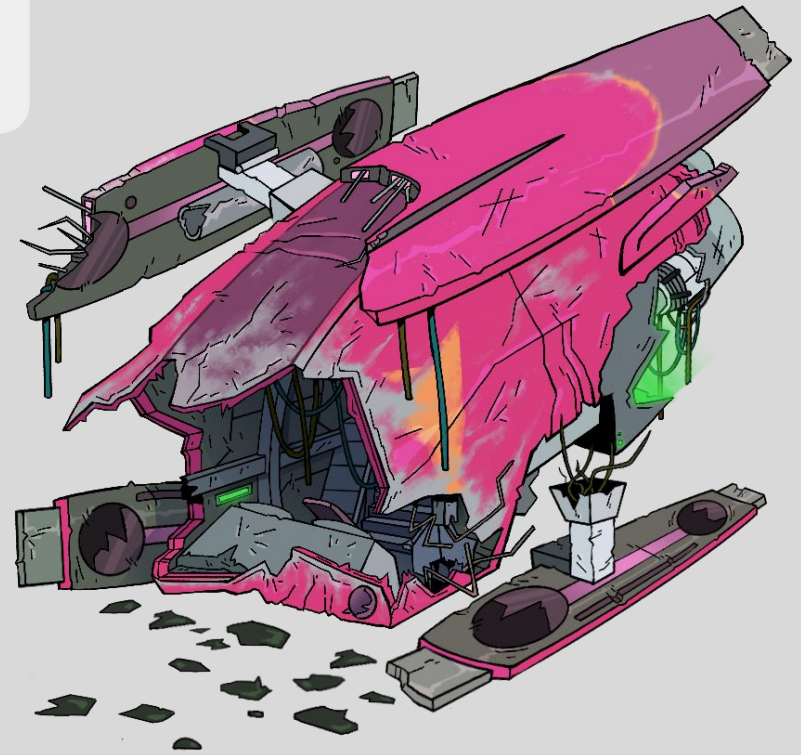


The model was taken and twisted in order to get an idea of how the aircraft crashed



Sketch iterations

This ship crashes on earth, stranding Meek (the pilot)



THANK YOU!

Instagram: @amm0_art

Website: www.analeahmartinezportfolio.com

LinkedIn: <https://www.linkedin.com/in/analeah-martinez-517654236/>

